

www.cafre.ac.uk

© [f](#) [in](#) [X](#) #DiscoverCAFRE



College of Agriculture,
Food & Rural Enterprise

Course Guide 2025

Higher
Education

Further
Education



DAERA

Department of Agriculture,
Environment and Rural Affairs
www.daera-ni.gov.uk

Open Days

Discover the right course for you at CAFRE

During the academic year we normally host Open Days in the spring and autumn to coincide with key times for your career planning.

Open Week - 7th October 2024

Open Week - 24th March 2025

Please visit our website for up-to-date information - click on the 'Study' tab and select 'Open Days'.



Contents

Open Days	2
Study at CAFRE	4
Why choose CAFRE?	6
Specialist facilities	8
A place to connect	10
Get future ready	11
International links	12
Higher Education industry support	14
Experience of a lifetime	16
Your home from home	18
Here to help	20
Money matters	22
How to apply - Further Education courses	26
How to apply - Higher Education courses	30
Our courses	34
Important and legal information	138

Study at CAFRE

Make a world of difference.

The College of Agriculture, Food and Rural Enterprise (CAFRE) is on the lookout for passionate students with the potential to make a difference to the agri-food and land-based sectors.



Within this course guide, you will find information on Level 2 through to Honours Degree programmes offered at Greenmount Campus, Antrim, Loughry Campus, Cookstown and Enniskillen Campus.

Studying a course that will lead you to job success is what every student wants. Our courses will develop your skills and knowledge to help you reach your potential in your chosen career.

Further Education courses are classified as Level 2 and Level 3 programmes, suitable for applicants leaving school after Year 12, with GCSE or equivalent qualifications, or for those working in the sector.

Higher Education courses are Foundation and Honours Degree programmes, suitable for applicants leaving school after Year 14, with A-Level or equivalent qualifications.

For detailed information on course structures, modules and entry requirements, please refer to the relevant course pages on our website www.cafre.ac.uk



**Reach your potential,
study at CAFRE.**



Why choose CAFRE?

If you want to make a real difference in the Agriculture, Food or Land-based sectors, CAFRE has the facilities, technology, and connections you need to get ahead.



Specialist facilities

You'll go far to find better facilities at which to study for a qualification in Agriculture, Horticulture, Food or Equine. With regular investment, our modern facilities benefit not just our students but also people working in industry, through Continuous Professional Development (CPD) courses.

Sought after graduates

Our results speak for themselves, on average over 95% of our graduates gain employment or progress onto further education within six months of completing their course.

Industry links

CAFRE has excellent links with businesses and organisations, many of which employ our graduates. Our students benefit from these industry connections by providing work placements, guest lecturers and real-life course projects.

Supportive environment

You are treated as an individual at CAFRE. Staff are friendly and approachable and ensure that you are supported both personally and academically to achieve your potential.

Practice makes perfect

If you're a hands-on type of person who doesn't want to be stuck behind a desk all day, then our courses are perfect for you. You will develop relevant practical experience, in modern specialist facilities applicable to your course.



Additional qualifications

In an increasingly competitive job market, you can add to your employability prospects by completing additional qualifications, valued by industry. While studying you may have the opportunity to attain Food Safety Certificates, Pesticide Application Certificates and British Horse Society (BHS) qualifications.

Industry consultation

We involve people from the world of work in everything that we do. From the industry experts who sit on our College Advisory Group, to the specialists who advise students on managing enterprises or projects. This means that our course content aligns with industry requirements.

Financial support

Students studying on Level 2 and Level 3 courses do not normally incur fees. With competitive Higher Education course fees and accommodation costs, you'll find that studying at CAFRE is not as expensive as you thought.

Higher Education students at CAFRE benefit from the college's close connections with businesses. In conjunction with our industry supporters, CAFRE degree students may apply for bursaries and scholarships over the duration of their course.

University life

If you're studying on our Foundation or Honours Degrees, validated by Ulster University, you can become an 'Associate Student' of the university. You'll be issued with a student card which can give you access to Ulster University library and sports union.

Students completing the Honours Degree in Agricultural Technology course are Queen's University students and have access to the university's resources in Belfast.

Course progression opportunities

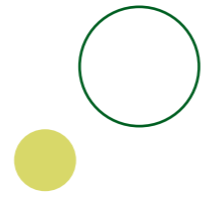
CAFRE offers students the chance to progress onto higher level courses. You can start your education with us on a Level 2 or Level 3 course, and on successful completion apply to study on a higher-level course. If it's a degree you

are interested in, and don't have the correct entry requirements, you could apply to a Foundation Degree. Once successfully complete, you may be eligible to progress onto an Honours Degree course. On completion of your Bachelor's Degree you could apply for the Master's Degree in Business for Agri-Food and Rural Enterprise programme. This is a Queen's University Belfast postgraduate course delivered at Loughry Campus, Cookstown. You can find information on the course on our website www.cafre.ac.uk

Our partnerships

CAFRE is a full member of Landex (Land Based Colleges & Universities Aspiring to Excellence). As such we are recognised as providing high quality cost-effective land-based education, training and professional development.

CAFRE is an 'Access Partner of the Higher Education Authority' which allows the college to utilise their resources to enhance, inform and improve teaching by providing staff with additional development opportunities.



Specialist facilities

One of the great things about CAFRE is that each of our three campuses delivers a specific range of courses and has the specialist facilities to match. We're investing in our buildings, equipment and resources so you can get the most out of your time with us. Get ahead of the competition with the practical skills you learn on our courses at CAFRE.

CAFRE students and staff have access to a library at each of the three campuses. Our libraries provide a modern learning environment with integrated library services, resources, study spaces and student computers. Users have access to electronic resources both on campus and at home.



Enniskillen Campus

Where you'll receive training in equine courses. The campus is located two kilometres from Enniskillen town in Co Fermanagh, on the A32 Irvinestown to Omagh Road.

Greenmount Campus

Focuses on agriculture and horticulture courses. The campus is located three kilometres from Antrim town, just off the A26 Dublin Road.

Loughry Campus

Provides education for food technology related qualifications. The campus is located three kilometres from Cookstown, Co Tyrone, just off the A29 Dungannon Road.



A place to connect

In the working world, making contacts is key. Luckily, the connections you make during your time at CAFRE will help you secure a great job after graduating. CAFRE students benefit from our excellent links with businesses and organisations in the agri-food and land-based industries.

Work placements

There's no better way to boost your CV than through an impressive work placement. Some of our students make such a good impression on placement that they get offered a job before finishing their course.

On placement you'll find out what it's really like to work in your chosen industry. It will help you develop interpersonal and communication skills and improve your organisational abilities. Work placements are an essential element of many of our courses. Check the website for information on the structure and duration of work placements for the courses you are interested in.

Our work placement co-ordinators will help you get ready for your placement. Many businesses contact us looking for good quality placement students. However, if you have business contacts, you can use them to secure your placement.

Depending on your course, you may have the opportunity to complete your placement abroad. Many of our students have spent part of their placement in Australia, New Zealand, France, Germany, and America. Work placements abroad will be offered subject to travel advice in place at the time.

What businesses do for us (and you)!

- Provide financial support
- Sponsor student projects and competitions
- Offer visits to see their companies in operation
- Supply guest lecturers - so you can hear it first hand
- Provide valuable work placements

Get future ready

Graduating can be a daunting experience for students, but you can get ready for the transition during your time at CAFRE.

Through our Careers Hubs, you will get training on how to write an eye-catching CV, assistance in interview preparation and practice at mock interviews. You will then use your newfound skills when applying for work placements.

In the final year of your course you'll get a chance to meet potential employers at a Careers Fair, organised by each campus every spring. Students can talk to employers and pick up employability and interview tips from seminar speakers. Careers Fairs are a great opportunity to find out what employers are looking for and what will help you stand out from the crowd.

Companies are aware of the high calibre of CAFRE graduates and keep us informed when they are advertising vacancies. We have a job opportunities section on our website which lists positions available in our specialist subject areas right across Northern Ireland and further afield. This provides a useful resource for both past and present students.



International links

CAFRE recognises the value of international travel. Students may have the opportunity to either study, go on study tours or work in countries all over the world.

Being able to experience different cultures and learn about the latest developments first hand is often a life changing experience.

We have a long-established student exchange programme with Michigan State University (MSU), where degree students can study at an American university and undertake modules that will complement their degree programme.



Experience different cultures... study, travel or work abroad.

Higher Education industry support

Bursaries and Scholarships

So, you've read this far and think CAFRE could be the place for you. Well, we have more great news; as well as being a fantastic place to learn and grow, as a degree student you can also take full advantage of the financial support on offer from our industry supporters.

Companies and organisations throughout Ireland support our students through the donation of:

Bursaries - typically worth £1,500, awarded on a competitive basis to Higher Education students.

Scholarships - provide successful students with £2,500 plus a paid work placement year.

Students are invited to apply for Bursaries and Scholarships once they are enrolled on a degree course at CAFRE.



Experience of a lifetime

Our three campuses are full of life. Set in spacious rural surroundings, you can immerse yourself in your studies during the day, then enjoy a fun-filled social life.

From Induction Week onwards you'll make new friends and quickly start to socialise both on and off campus. All of our campuses are near local towns and you'll soon hear of trips organised for fun further afield.

Get involved

Representatives from each class are elected to the Students' Representative Council (SRC) at each campus. Each SRC organises a lively programme of social events throughout the year and supports local charities through fundraising events. The highlight of the year is the Student Formal, held by each campus, when students dress up and let their hair down at the same time. The clubs for sports and other activities vary from campus to campus, depending on the interests of the students.



Your home from home

Starting college can be an exciting experience offering the chance to move away from home for the first time. Not all students live on campus but those who do enjoy the attractive range of amenities available at CAFRE.

Priority for on-campus accommodation is given to first year students new to the campus or students with special requirements. Applications for accommodation open in the June of the year before you intend to start your course. Please refer to our website for the accommodation allocation procedure.

Life on campus

Greenmount Campus has accommodation for 195 students. Accommodation style varies from Halls for under 18s, to bungalows for over 18s. Greenmount students can use the sports hall and fitness suite, together with a number of football pitches, and the facilities at the Greenkeeping and Golf Academy.

Loughry Campus accommodates 95 students in single study bedrooms. Students have access to an on-campus recreation centre and the Mid Ulster Sports Arena, a modern facility on the edge of the campus. It includes grass and all-weather pitches, an endurance area incorporating a multi-use games area, a strength and conditioning room and a 1,400m trim trail.

Enniskillen Campus has accommodation for 70 students in single study bedrooms and student bungalows. Students can use the fitness suite as well as the recreation room which includes pool tables, air hockey and table tennis. In addition, students are encouraged to help develop their fitness by using the dressage and racing simulators on site. Livery is available for a limited number of student horses. Students with their own horses can access the horse walker, hacking track, indoor and outdoor arenas after hours.

Accommodation costs

CAFRE offers competitively priced student accommodation. The cost varies depending on the type of accommodation and whether living in catered or self-catered Halls of Residence. Please refer to our website for accommodation costs.

Meals

The modern dining rooms and snack bars offer food and drinks throughout the day to both residential and non-residential students.

Greenmount



195
bedrooms.

Loughry



95
bedrooms.

Enniskillen



70
bedrooms.



Here to help

You'll find that starting college, making new friends and studying a subject of your choice is exciting, but it can also be a bit challenging. Part of college life is about learning to look after yourself, making decisions and managing your time and money.

Don't worry, there's a range of people at CAFRE to help you any time you need support. Your Personal Tutor will be there to advise you on academic issues. Our Student Support Officer provides individual advice and guidance on personal, academic and financial matters and any other concerns you may have. In the first few days of your course you'll take part in an induction programme, during which you'll find out about our full range of support services, and the people who are there to help you.

Student Services and Residential Support Teams

To help you settle into life on campus we have Student Services Managers at each campus who are on-hand to offer advice and assistance should you need it. Our Residential Support Teams are available to assist students living in campus accommodation.

Medical services

Residential students who wish to transfer to a local doctor, or who are living outside the practice area of their family doctor (generally 15km), may register with a local doctor of their choice. If you are unwell, the Residential

Support Team will make arrangements for you to attend a doctor, or if necessary, take you to hospital.

Support for students with disabilities

If you have a disability or specific learning difficulty please let us know as early as possible so we can meet your individual requirements and provide timely support. Contact our Student Support Officer for further information.

Counselling service

As a CAFRE student you will have access to a free 24/7 independent and confidential service either by telephone or by face-to-face counselling on or off campus. The service is discreet and professional, and its staff have experience in dealing with all types of problems students may face. We hope you will not need this service but it is reassuring to know that it is there.

CAFRE student support services comply with our policies on; Anti-bullying, Drugs and Alcohol, Pastoral Care, Health Promotion, Equality and Diversity, Sexual Orientation Discrimination and Health and Safety. Details of these policies and our Student Charter are available at: www.cafre.ac.uk



Money matters

Further Education

There are no fees for CAFRE full-time Further Education courses. For information on costs associated with individual courses please refer to our website.

DAERA funding

CAFRE is part of the Department of Agriculture, Environment and Rural Affairs (DAERA) and most students enrolled on Further Education courses at CAFRE are eligible for funding by DAERA. However, if you have previously undertaken a publicly funded Further Education course in the United Kingdom you will not normally be eligible for funding for a CAFRE course at the same or lower level.

What financial support is available?

If you are a Northern Ireland resident you can apply for a means tested living expenses grant. The amount of grant depends on whether you live at your parental home or away from home.

DAERA's financial support is administered by the Further Education Awards Section of the Education Authority. A DAERA booklet called "Further Education Financial Support for Students" explains the details of this financial support and you can obtain a copy from CAFRE's Admissions Office or the Education Authority.

You can also download this information from: www.daera-ni.gov.uk or visit: www.eani.org.uk/feapplication

Additional support

There are other grants and allowances available to help you with the cost of undertaking your course if you have a disability or dependants. Information on all these grants and allowances, and how and when to apply, can be found in the DAERA booklet.

For more information on financial support for full-time Further Education courses at CAFRE please contact:

Education Authority
Further Education Awards Section
1 Hospital Road
Omagh
BT79 OAW

Tel: (028) 8225 4546

Email: feawards-wr@eani.org.uk





Money matters

Higher Education

When it comes to funding degree courses, you will have two main costs; tuition fees and living costs.

Higher Education Tuition Fees

Following a review of Higher Education (HE) student course fees, CAFRE introduced a new student fee framework in 2022. This is referred to as the 'Current Student Fee Framework' and applies to students who first enrolled on a CAFRE HE course from September 2022. The current student fee framework aligns student fees at CAFRE with the fees charged by other HE Institutions and Further Education (FE) Colleges across Northern Ireland.

Please refer to the Funding Support section of our website for more information:

www.cafre.ac.uk

Students applying to study on the BSc (Hons) Degree in Agricultural Technology will be enrolled as Queen's University Belfast students and pay tuition fees set by Queen's.

Financial support for Higher Education students from Northern Ireland

If you're normally a resident in Northern Ireland you can apply to Student Finance NI for financial support. Check out: www.studentfinancenl.co.uk which will give you all the details and help you find your local Education Authority for more assistance. The following is a short summary of the support available to eligible students;

- Tuition Fee Loan

Non means-tested and available to cover your tuition fee costs. You start repaying the loan on completion of your studies, depending on your income. For more information on repayments go to:

www.studentloanrepayment.co.uk

- Maintenance Grant or Special Support Grant

Depending on your household income, you could get support through the Maintenance Grant or Special Support Grant.

- Maintenance Loan

Available to help with your living expenses and repayable on completion of studies. Although means-tested, all eligible students will get some loan.

- Additional support

There are other allowances that provide extra help with living expenses depending on your circumstances. These include the; Parents' Learning Allowance, Childcare Grant, Adult Dependents' Grant and Disabled Students' Allowance.

Financial support for students from Great Britain

English residents should contact: Student Finance England:
www.gov.uk/student-finance

Scottish residents should contact: Student Awards Agency for Scotland (SAAS):
www.saas.gov.uk

Welsh residents should contact: Student Finance Wales Contact Centre:
www.studentfinancewales.co.uk

Financial support for EU students
For up-to-date information EU students should refer to:
www.gov.uk/student-finance/eu-students



How to apply

Further Education courses

If you are interested in studying on a full-time or part-time Level 2 or Level 3 course you apply to CAFRE using our online application form accessed from the course page on the website: www.cafre.ac.uk

Applications for a course will only be accepted from 1st October of the year preceding the year in which you expect to enrol.

Students must be at least 16 years of age on or before 1st July in the year they propose to enrol on the course.

You can apply for more than one course, but you must indicate your course preferences by ranking their order on your application. We will acknowledge receipt of your application form within seven days.

What happens next?

You will be invited to attend a short careers discussion at the campus of your choice.

If you are successful in your application you will be made an offer of a place on a course, but this may be conditional on achieving minimum examination results and/or undertaking work experience.

A letter will be sent to you within five working days of the interview.

Before we can confirm your place on a course, you must provide us with a copy of your examination results/certificates. You can contact us for information or advice at any time during the application process. When your offer is confirmed and you inform us that you are accepting a place at CAFRE, we will send you details of accommodation, timetables and any protective clothing or equipment that you may require.

If courses are oversubscribed, minimum entry criteria may be enhanced and date of application may be considered.



Further Education

Application process

Top tips

- Apply early
- Study hard
- If your grades fall below what you expected talk to us for advice



On Results Day

Email results you have received from any Awarding Body other than CCEA, along with your name, address and date of birth, to the campus where your course will be delivered.

Once we have received all your results CAFRE will contact you regarding the status of your offer.

If your results obtained are below entry requirements, don't panic! Contact CAFRE Admissions to discuss your options.

Further Education

Course entry requirements

Level 2 and 3 courses

When we receive your examination results we convert the grade attained into points to enable the College to rank order the applications received based on scores.

Qualification	Grade	CAFRE points
GCSEs	A*	6
	A	5
	B	4
	C*/C	3
	D	2
BTEC Level 2 Diploma / First Diploma	Distinction	20
	Merit	16
	Pass	12
Essential Skills / Key Skills	Level 2	3
	Level 1	2

Where an applicant has completed a Level 2 qualification or equivalent after completing GCSEs, CAFRE will normally base any offers on the qualification, which attracts the higher points.

Students enrolled on a CAFRE course, who do not have a GCSE in English Language and Mathematics at Grade C or above, or equivalent, will have to complete Essential Skills qualifications.

Applicants who have previously completed a qualification will only be offered a place on a programme at the same level after all other applicants have been considered. Further clarification on what constitutes progression is available by emailing: cafreenquiries@daera-ni.gov.uk

Where a course requires a Science subject as an entry requirement and Single or Double Award Science has not been studied, please email: cafreenquiries@daera-ni.gov.uk for clarification on other relevant Science subjects.



How to apply

Higher Education courses

Full-time applicants

If you're applying for a full-time Foundation or Honours Degree course you must submit your application through the Universities and Colleges Admissions Service (UCAS) at: www.ucas.com

The UCAS website will list the code names and numbers for all our courses. Our Institute code is A45.

If you're applying for the BSc (Hons) Agricultural Technology course, you should apply through UCAS to Queen's University Belfast using their Institute code of Q75.

Full instructions and detailed online help are available from UCAS at the touch of a button. It includes a guide called 'Applying Online', available as a PDF file, which has all the background information you need on the application process.

If you're planning to start your course in autumn 2025, UCAS will accept your application from 5th September 2024.

Applications made after 29th January 2025, are placed through UCAS Extra. These are deemed as late applications and will only be considered at the discretion of the College, if there are vacancies on the course, but please do check with us. Applications received after 5th July are entered into UCAS Clearing.

If you apply before the 29th January, a decision on your application will normally be made by the end of March. You will be informed of the decision through your UCAS Hub.

If you already have the appropriate entry qualifications, we may make you an unconditional offer and you will be able to decide immediately if you wish to take up the offer. If you are still studying for the necessary entry qualifications, we may make you a conditional offer, specifying the minimum grades you need to obtain in your examinations.

For some courses an interview will be necessary

before a final decision can be made. When you have received replies from all your UCAS choices, you must decide upon one 'firm' acceptance, and you may select a second as 'insurance'.

The final selection is normally made in mid-August when examination results are issued. If you do not achieve the grades we asked for in our conditional offer you may still be offered a place and you should check with our Admissions Office.

Part-time Higher Education applicants

If you're applying for one of our part-time Foundation, Honours Degrees or Degree top-up courses, you should apply directly to us using our online form at: www.cafre.ac.uk

After applying for a part-time course you will be invited to attend a short interview at the College and will have an opportunity to tour the campus and view the teaching facilities. This interview usually takes place between March and August.

Higher Education

Course entry requirements

The table on page 32 shows the UCAS tariff point conversions for grades obtained for our main entry qualifications. If you have completed other qualifications including BTEC or City & Guilds UCAS tariff point conversions are available at:

www.ucas.com/ucas/tariff-calculator

Entry requirements for specific courses are detailed on the course pages of the website.

Applicants must be at least 17 years of age on 15th October of the year of entry.

Applicants must meet the necessary requirements as well as the General Entrance Requirements of the awarding University.

If you are applying to Ulster University validated Degree courses please refer to: www.ulster.ac.uk/study/entrancerequirements/

If you are applying to the Queen's Agricultural Technology Degree course please refer to: www.qub.ac.uk/Study/Undergraduate/How-to-apply/generalentrance-requirements/

The College is committed to equality of opportunity for all prospective and current students.

Entry requirements for courses are detailed on specific website course pages.

Applicants must meet the University's General Entrance Requirements

UCAS tariff points equivalent

Qualification	Grade	UCAS point equivalents
A-Levels	A*	56
	A	48
	B	40
	C	32
	D	24
	E	16
Irish Leaving Certificate	H1	36
	H2	30
	H3	24
	H4	18
	H5	12
	H6	09
	O1	12
	O2	10
	O3	08
	O4	06

If you have completed other qualifications including BTEC or City & Guilds log onto the UCAS website: www.ucas.com/ucas/tariff-calculator

The College will consider applications from candidates with equivalent qualifications. Advice is available from the Admissions Office or consult the UCAS tariff tables available at: www.ucas.com



Agriculture

Level 3 Advanced Technical
Extended Diploma in Agriculture

Level 2 Technical Certificate
in Agriculture

Level 3 Diploma in Work-based/
Apprenticeship Agriculture

Level 2 Diploma in Work-based/
Apprenticeship Agriculture

Level 2 Multi-skilling programme

BSc (Hons) Degree in Agricultural
Technology

BSc (Hons) Degree in Sustainable
Agriculture with pathways in
Agri-Business or Land Management

Foundation Degree in Agriculture
and Technology

City & Guilds Level 4 Diploma
in Agriculture Business
Management



Industry insights

In Northern Ireland the agri-food industry is the single largest employer, providing an estimated 100,000 jobs and providing a gross output from agriculture of £3.07 billion in 2022.

There are many complex issues facing the agricultural industry, including global competitiveness, sustainability, and compliance with agricultural and environmental policy. It is important that those considering a career in the industry can adopt and embrace new technologies, policies and market opportunities.

Higher Education, Degree courses at Greenmount Campus are designed to create graduates with a sound grasp of new developments and a proven ability to manage commercial businesses and enterprises. Our agriculture programmes have repeatedly received endorsements of the industry.

Further Education, Level 2 and Level 3 courses at Greenmount Campus are highly practical and business focused aiming to develop students' skills to enable them to work either on the home farm or to pursue a career in the agriculture sector.



Agriculture careers

Students enter the industry at different levels depending on their qualifications and experience. Graduates from our Further Education courses have the option of continuing their study for a higher-level qualification or may seek employment after graduation. Graduates from our degree courses now hold many senior positions in the agriculture sector. The level at which graduates enter the agriculture industry will depend on their qualifications and experience.

For more information on career choices visit the Alumni section of the website:

www.cafre.ac.uk

Farmers/Practical agriculture

Some graduates return to farming either as farmers or assistants on large farms. Successful farmers need to be technically and practically competent and be able to make good business decisions in a changing environment.

Unit Manager - pigs, dairy, beef or sheep

Unit managers will focus on one livestock enterprise within a farm business, managing the daily running of that unit. Work will vary depending on the livestock involved but will generally involve breeding, feeding and animal health. Unit managers may need to work closely with other section heads.

Agriculture Machinery Operator

There is a wide variety of work involving machinery operations, including cultivation and planting, spraying, sowing, fertilising,

harvesting crops and silage, digger work and spreading slurry. Basic maintenance of machinery will also be expected.

Assistant Farm Manager

Carry out the day-to-day running of a farm working closely with the farm manager. Work may involve grassland management, crop and livestock husbandry depending on the farm.

Livestock Technician

There are many variations of a livestock technician, but most offer specialist services to dairy, beef and sheep farms including cattle foot trimming, artificial insemination of cows and ewes, and pregnancy diagnosis through scanning.



Sales/Marketing Representatives

Employment opportunities exist in a wide variety of industries ranging from animal feed companies to agrochemical and fertiliser companies. Graduates need to have a good understanding of their customers' needs and the products they are selling. Service industries such as insurance companies or machinery dealerships occasionally employ people with agricultural backgrounds to provide a better service to their farming clients. This sector seeks graduates with good initiative and well developed interpersonal skills.

Teachers/Lecturers

Graduates may find interesting and rewarding careers in this area. College lecturers normally require degree level qualifications, a good technical knowledge of farming and the environment, the ability to interpret data and communicate information to their audience.

Consultants/Technical Advisers

Graduates employed in this sector require a sound technical background so that they can help farmers identify and deal with technical problems and advise on the options for the development of their farm businesses. Good communication skills, an entrepreneurial, innovative outlook and the ability to advise individuals and companies on the impact of proposed actions are very important in this job area.

Researchers

Continuous research is vital if any industry is to progress and this applies very much to the agriculture sector. Interesting and rewarding careers exist in this area for those who enjoy scientific investigation, research design and implementation, or who have an aptitude for statistical research and forecasting based on industry trends.

Journalists

Agricultural journalism is a rewarding career for anyone wishing to combine their knowledge of agriculture and current affairs with writing skills in producing articles for the media. Being an agricultural journalist is all about meeting deadlines and looking at new and different ways to cover a story.

Farm Liaison Representatives

Food processing companies employ farm liaison representatives to strengthen links with the farmers who supply their raw materials. They must have a sound technical knowledge of the relevant agricultural enterprise, an understanding of the processing operation and good negotiation and communication skills. Farm liaison representatives may be involved in marketing, identifying and selecting new suppliers and updating existing producers on changing technical requirements.

Farmers/Farm Managers

Some graduates return to farming either as owners or managers. Successful farmers need to be technically and practically competent and be able to make sound business decisions in a changing environment. They also need to appreciate consumers' requirements for safe, wholesome, high quality food produced in an environmentally friendly manner.



Agriculture facilities

Our farms at Greenmount are the focus for the educational activities at the campus. They provide an excellent practical learning resource for students undertaking agriculture programmes.

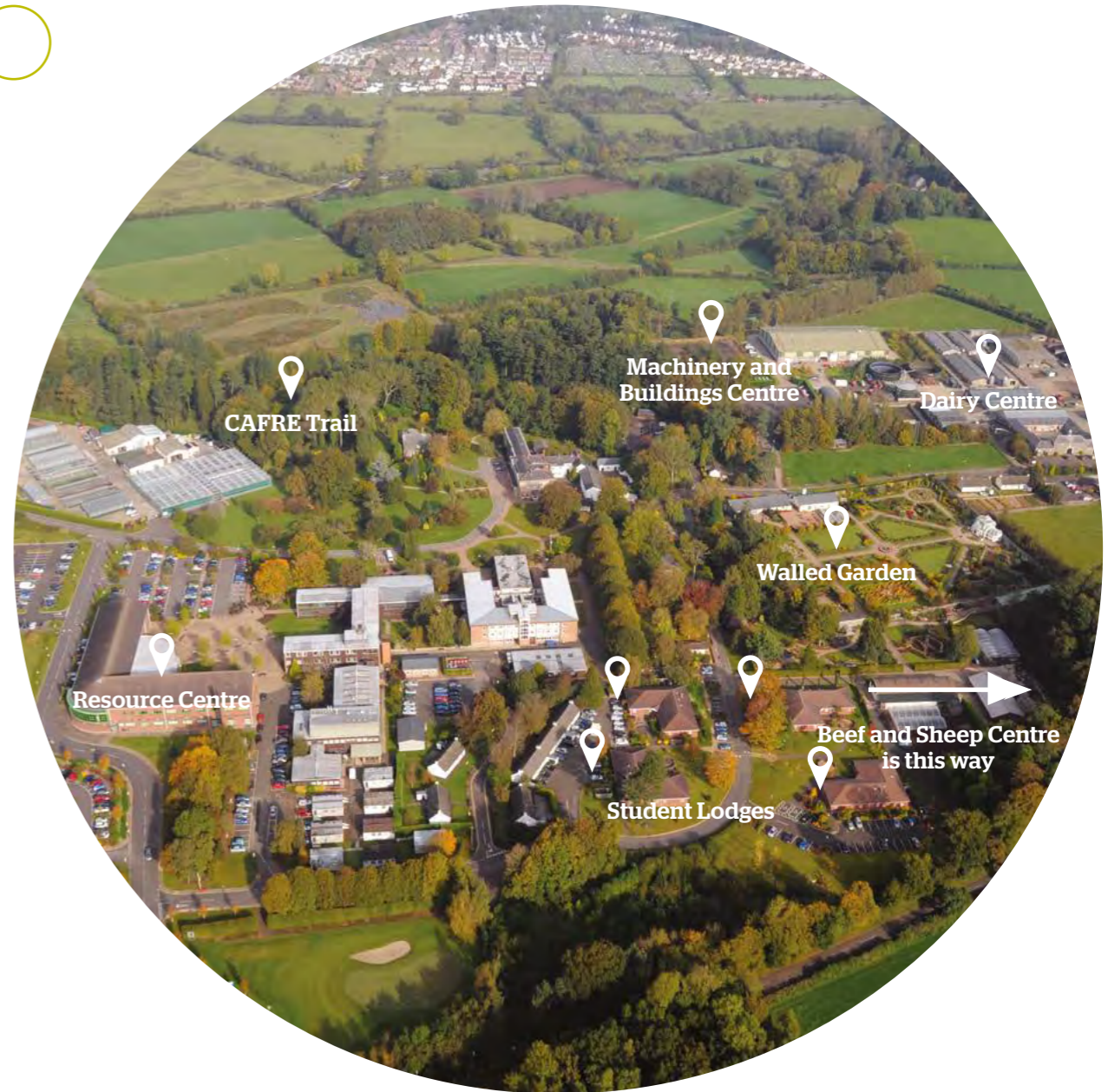
The Greenmount Campus Farm is made up of the Dairy Centre and the Beef and Sheep Centre (353 hectares) and the Hill Farm Centre (978 hectares). The College farm is LEAF Marque accredited. The globally recognised LEAF Marque (Linking Environment And Farming) assurance standard promotes sustainable and profitable production from environmentally responsible and sustainable farm businesses. The three centres ensure integrated decision making and high environmental standards are used to produce premium, quality food. We also have a constructed wetlands system, an artificial wetland which acts in a similar manner to the bio-filtration action of natural wetlands. There we channel waste water from the farm through a series of five ponds and at the end it is of good enough quality to release into a stream. Degree students use this site in their environmental science work.

The centres provide a unique resource for students to adopt a 'learning by doing' approach while undertaking a course at CAFRE. Furthermore, the centres are used extensively by Technologists and Advisers

to demonstrate and promote the adoption of the latest technological advances within the livestock and arable crop sectors.

Dairy Centre

The Dairy Centre is part of a 238 hectare mixed lowland farm with 180 dairy cows in the herd plus replacements. The unit has been designed to best meet the education and training needs of agriculture students and the dairy industry, to enable the delivery of knowledge and technology transfer. The Centre complies with all relevant legislation and animal welfare recommendations. Degree students can select DAIRY as a student learning project, gaining practical and management experience in the enterprise, and analysing physical and financial performance. The Dairy Centre grows approximately 50 hectares of crops each year, mainly cereals and potatoes. The arable area on the farm is used by students to practice many of the arable skills required by industry. Those with a keen interest can become actively involved through the CROPS degree student learning project.



Beef and Sheep Centre

The Beef and Sheep Centre, located at the Abbey Farm comprises a 115 hectare lowland unit with 90 suckler cows, 200 finishing cattle and 230 ewes. The RED MEAT learning project allows degree students to gain practical and management experience in the beef and sheep enterprises and analyse enterprise physical and financial performance.

Hill Farm Centre

The Hill Farm Centre is located at Glenwherry, midway between Ballymena and Larne. It is a 978 hectare hill farm comprising 110 suckler cows and 1,100 ewes. The UPLANDS (Uniting the Production of Livestock and Nature Development for Sustainability) student learning project allows Foundation Degree and Honours Degree students to have responsibility for the livestock on the Hill Farm Centre which is managed in an environmentally sensitive manner. Students can analyse farm physical and financial performance and influence future management and policy decisions.

Further Education courses

Further Education programmes are suited to those leaving school with GCSE or equivalent level qualifications.

Applications to these courses are made directly to the college online through www.cafre.ac.uk from the 1st October of the year preceding the September you wish to enrol.

Where courses are oversubscribed, entry criteria may be enhanced in line with the College's Admission Policy.



City & Guilds Level 3 Advanced Technical Extended Diploma in Agriculture | 1080 award

This full-time course is designed to provide the knowledge and skills for a career in the land-based sector combining practical skills development on the college farms, classroom theory and one year of industry work experience.



City & Guilds Level 2 Technical Certificate in Agriculture

This full-time course covers a range of farm enterprises and is ideal for those who want to start a career within the agriculture sector. Students will learn practical crop and livestock skills both on the college farms and in the classroom. Students will also complete work experience as part of their course.



Course entry requirements

Normally four GCSE passes at Grade C, or equivalent, including English Language, Mathematics and a Science subject.

Applicants must also demonstrate that they have relevant industry experience, which can be acquired prior to leaving school.

How to apply

Online: www.cafre.ac.uk

Course duration

3 years, with one year work placement in second year.

Course location

Greenmount Campus

Course entry requirements

Applicants must normally have obtained at least two GCSE Grade Cs or three Grade Ds, including English Language and Mathematics or equivalent Essential Skills qualifications.

Applicants should also normally have completed 40 hours of relevant work experience before starting the course.

How to apply

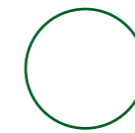
Online: www.cafre.ac.uk

Course duration

1 year full-time

Course location

Greenmount Campus



City & Guilds Level 3 Diploma in Work-based/ Apprenticeship Agriculture

This part-time course gives applicants the flexibility to combine work and education. The course reinforces production and management skills in a chosen livestock enterprise.

This course can also be completed through the Apprenticeships Framework. Refer to www.cafre.ac.uk for more information.



Course entry requirements

Applicants must have completed a Level 2 Diploma in Work-based Agriculture and normally attained a Grade C in English Language and Mathematics or equivalent.

or

Level 2 Apprenticeship, Diploma or Technical Certificate in Agriculture or equivalent qualification and normally a Grade C in English Language and Mathematics and ICT or equivalent.

Applicants must be working within the agriculture sector for at least 21 hours per week for the duration of the course.

How to apply

Online: www.cafre.ac.uk

Course duration

2 years part-time

Course location

Workplace and off-the-job training

City & Guilds Level 2 Diploma in Work-based/ Apprenticeship Agriculture

This part-time course places an emphasis on practical skills development with students attending class one day per week with the other four days being spent on the farm.

This course can also be completed through the Apprenticeships Framework. Refer to www.cafre.ac.uk for more information.



Course entry requirements

Applicants must normally have obtained at least two GCSE Grade Cs or three Grade Ds, including English Language and Mathematics or equivalent.

Applicants must be working within the agriculture sector for at least 21 hours per week for the duration of the course.

How to apply

Online: www.cafre.ac.uk

Course duration

2 years part-time

Course location

Workplace and off-the-job training



Level 2 Multi-skilling programme

This programme aims to provide young people training for a trade at a Regional College with the opportunity to gain a qualification in agriculture.

Students will study at Greenmount Campus, on block release, to attain a City & Guilds Level 2 Diploma in Work-based Agriculture - Livestock Production.



SCAN ME

Course entry requirements

Applicants must normally have obtained at least two GCSE Grade Cs or three Grade Ds, including English Language and Mathematics (or equivalent Essential Skills qualifications in Communication and Application of Number).

Applicants should also normally have completed 40 hours of relevant work experience before starting the course.

How to apply

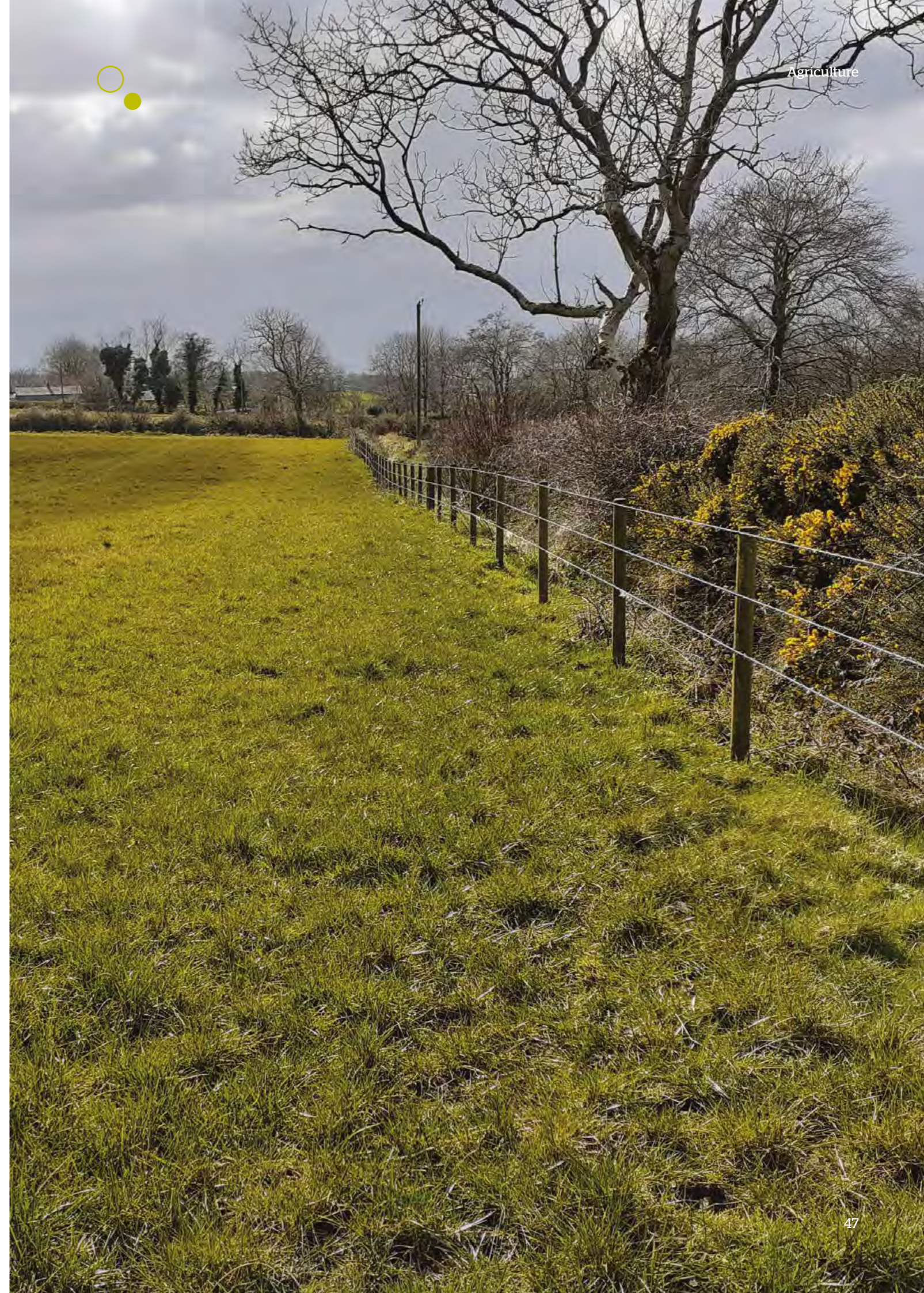
Online: www.cafre.ac.uk

Course duration

59-78 weeks part-time

Course location

Regional Colleges and Greenmount Campus



Higher Education courses

Higher Education programmes are suited to those leaving school with A-Level or equivalent qualifications. Full-time applications to these courses are made through UCAS. Part-time, where applicable, are made directly to the college online at: www.cafre.ac.uk

Degree course applications are subject to meeting the General Entrance Requirements of the awarding university.

For entry qualifications other than those listed please refer to the UCAS website: www.ucas.com/ucas/tariff-calculator



BSc (Hons) Degree in Agricultural Technology (3 years)

BSc (Hons) Degree in Agricultural Technology (4 years) with Professional Studies

Through a collaboration with Queen's University Belfast (QUB) the first and second year of this course are spent at CAFRE, Greenmount Campus with the final year at QUB. This partnership arrangement capitalises on the strengths of both institutions to provide a course which is academically challenging with a strong focus on the application of business, economic and scientific principles.



Course entry requirements

Three Grade Bs at A-Level including at least two relevant subjects and GCSE Mathematics Grade C. Or ABB including one relevant subject and GCSE Mathematics Grade C.

For other qualifications, please consult the UCAS website: www.ucas.com/ucas/tariff-calculator

How to apply

UCAS course code (select one code only):

D470 (4 year)

D473 (3 year)

For queries re subject suitability contact: The Admissions Manager

Email: admissions@qub.ac.uk

Tel: 028 9097 3838

QUB Admissions process applications for this course.

Course duration

3 or 4 years depending on work placement duration

Course location

Greenmount Campus and Queen's University Belfast

BSc (Hons) Degree in Sustainable Agriculture with pathways in Agri-Business or Land Management

Validated by Ulster University this course is particularly relevant to those interested in agriculture and the environment or agriculture and business. Two pathways are available: Agri-Business or Land Management. Students select the pathway they wish to study during their first year on the course.



Course entry requirements

Students should normally have at least 104 UCAS tariff points at A2 Level (including a science subject, preferably Biology or Chemistry) plus four appropriate GCSEs or equivalent, including English Language and Mathematics at Grade C or above.

Applicants are normally required to have at least three months relevant practical experience.

How to apply

Full-time UCAS course code: 005D

Part-time online: www.cafre.ac.uk

Course duration

Full-time: 3 or 4 years depending on work placement duration

Part-time: 6 or 7 years depending on work placement duration

Course location

Greenmount Campus

Foundation Degree in Agriculture and Technology

The Foundation Degree (FdSc) in Agriculture and Technology is validated by Ulster University. This course aims to help students develop the production, management and marketing skills required to work in the land-based sector.



Course entry requirements

Students should normally have at least 48 UCAS tariff points at A2 Level (including a Science subject) plus four appropriate GCSEs or equivalent, including English Language and Mathematics at Grade C or above.

Applicants are normally required to have at least three months relevant experience to include livestock husbandry skills and operation of farm machinery in an agri-business.

How to apply

Full-time UCAS course code: 004D

Part-time online: www.cafre.ac.uk

Course duration

Full-time: 2 or 3 years depending on work placement duration

Part-time: up to 4 years

Course location

Greenmount Campus



City & Guilds Level 4 Diploma in Agricultural Business Management

This part-time course is designed for people working in the agriculture sector offering flexibility to combine employment with the attainment of a Higher Education qualification. The course strengthens production, business and management skills demanded by employers enabling staff to affect change and monitor and evaluate its impact on the enterprise.



Course entry requirements

Level 3 Diploma in Work-based Agriculture and normally a Grade C in English Language and Mathematics or equivalent.

OR

Level 3 Diploma in Agriculture or equivalent qualification and normally a Grade C in English Language and Mathematics or equivalent.

How to apply

Online: www.cafre.ac.uk

Course duration

2 years part-time

Course location

Workplace and off-the-job training



Equine

Level 3 Advanced Technical
Extended Diploma in
Equine Management

Level 2 Technical Certificate in
Equine Care

Level 3 Apprenticeship in the
Equine Industry

Level 2 Apprenticeship in the
Equine Industry

BSc (Hons) Degree in
Equine Management

Foundation Degree in
Equine Management

Certificate of Higher Education in
Equine Science and Management



Industry insights

The equine industry operates globally and has many job opportunities enabling students to experience life and work around the world.

Enniskillen Campus provides the widest range of equine programmes in Ireland. Courses have been developed which meet the needs of the industry and students alike, producing graduates with the capability to succeed in a wide range of careers. Through the courses, the College aims to help develop a competitive equine industry and aspires to give students an insight into many different equine related careers.

Industry connections
Enniskillen Campus has strong connections with industry organisations including Coolmore, Godolphin, The Irish Field, Horse Racing Ireland, Horse Sport Ireland and Spy Coast Farm. These organisations provide 'once in a lifetime' opportunities for work placements and degree graduate internships which help young people develop their employability skills 'in the real world' under the guidance of a supportive employer.



Equine careers

Students enter the equine industry at different levels depending on their qualifications and experience. Graduates from our Further Education courses have the option of continuing their study for a higher-level qualification or may seek employment after graduation. Graduates from our Higher Education courses now hold many senior positions in the equine sector.

For more information on career choices visit the Alumni section of the website:
www.cafre.ac.uk

Racing careers

The racing industry requires highly skilled people to work with Thoroughbreds. Successful staff require well developed people skills and knowledge of the industry, as well as excellent horsemanship.

Competition and stud careers

Grooms should be in excellent health, physically fit, hardworking, skilled and motivated. Some grooms also ride and compete in their chosen discipline. Progression to head groom or travelling groom usually comes with experience.

Riding careers

There are a number of jobs worldwide for experienced work riders. Talented, dedicated riders can progress in their area of expertise to become competition riders or jockeys.

Retail careers

Equine retail is an expanding part of the industry. Staff in this area of work need an extensive knowledge of horse tack and riding equipment, along with excellent communication skills.

Horse production

The production of sport horses is a large part of the industry. The production of horses requires excellent horsemanship, good people skills and knowledge of business management and marketing.

Racehorse trainers

The racing industry requires highly skilled people to work as racehorse trainers. Successful racehorse trainers require well developed business management and people skills as well as excellent horsemanship.

Riding instructors

A teaching vocation within the equine industry will offer a challenging career and a high level of job satisfaction. Riding instructors need to be enthusiastic, confident, patient and articulate with a sense of humour and good communication skills.

Service industries

A variety of industries within the service sector, such as insurance brokers and the tourism industry, employ people with equine related backgrounds to provide a service to their clients.

Administration

Opportunities also exist with governing bodies such as Weatherbys, the Turf Club, Horse Sport Ireland, Horse Racing Ireland and Show Jumping Associations. There are other posts within industry involved in handicapping, marketing and development.

Technical sales representatives

Due to the changes and developments within the equine market there are a number of companies supplying materials and equipment to the industry. These can vary from feed merchants and equipment retailers, to bloodstock sales companies and businesses selling alternative therapies. Sales representatives must have a thorough knowledge of their products and the ability to establish a positive rapport with customers.

Equine lecturers

There is a number of equine related education and training job opportunities for graduates. Equine lecturers require good technical knowledge, the ability to transfer specialist expertise and good communication skills.

Equine business owners/managers

To successfully manage an equine business, people require technical and practical competencies and the ability to make sound business decisions in a changing environment.

Technical advisers

Technical advisers help equine owners to identify and deal with problems and also assist and advise on business development. Advisers need sound technical and business management knowledge, as well as the ability to assess the impact of new information and technology. They also require an innovative outlook and good communication skills.

Our equine facilities

Equine courses offered at Enniskillen Campus incorporate a strong practical dimension and the philosophy of 'learning by doing' is applied throughout all programmes.

Specialist amenities

The campus was founded in 1967 and has provided over 50 years of high quality education and training with equine courses being offered since the early 1990s. The combination of excellent equestrian, teaching and residential facilities at the campus enables students to develop their practical and academic competencies in a pleasant environment. The students receive excellent support from members of the local equine industry. The campus has been redeveloped to provide an impressive range of indoor and outdoor facilities. There are stabling facilities for student livery horses, horse walkers, an indoor arena and a number of outdoor arenas and recently developed active turnout facilities.

Hands-on experience

The campus racing enterprise provides students with invaluable experience in handling and riding racehorses in training. A specialist breeding unit enables students to gain experience in managing a yard and participate in the events within the equine stud calendar. The equitation unit provides first class facilities for training the horse and rider. Students also have the opportunity to contribute to the management of the equine units at the campus. This helps students to develop management and organisational skills including maintaining detailed physical and financial records. The units also provide students with the opportunity to gain hands on experience in the daily care and handling of broodmares, horses and youngstock. There is a range of broodmares in the campus breeding unit including Flat and National Hunt Thoroughbred and Sporthorse mares. Students are involved in a range of activities including preparation for foaling, monitoring mares around foaling, stallion selection and preparation of the Thoroughbred foals for the sales.

In addition to completing their formal academic studies, students participate in a wide range of activities throughout the academic year, which complement formal course work. These activities include the Campus Racing and Riding Clubs.

The campus racing enterprise provides students with invaluable experience in handling and riding racehorses in training.



Further Education courses

Further Education programmes are suited to those leaving school with GCSE or equivalent level qualifications.

Applications to these courses are made directly to the college online through www.cafre.ac.uk from the 1st of October of the year preceding the September you wish to enrol.

Where courses are oversubscribed, entry criteria may be enhanced in line with the College's Admission Policy.



City & Guilds Level 3 Advanced Technical Extended Diploma in Equine Management

This full-time course provides excellent preparation for those wishing to pursue a career in the equine industry or progress onto degree courses. The course is taught using the extensive practical equine facilities at Enniskillen Campus.



Course entry requirements

Normally four GCSE passes at Grade C, or equivalent, including English Language and Mathematics.

Those wishing to undertake the riding unit should be at British Horse Society Stage 2 level. Please note there is a weight limit of 89kg (14 stone), including tack and equipment.

Applicants must also demonstrate that they have a minimum of 40 hours of experience in the equine industry, which can be acquired prior to leaving school.

How to apply

Online: www.cafre.ac.uk

Course duration

2 years full-time including a five-week work placement

Course location

Enniskillen Campus



City & Guilds Level 2 Technical Certificate in Equine Care

This full-time course offers students the opportunity to develop a wide range of practical skills. Graduates will be suited to enter a range of employment opportunities in the equine sector, or may progress on to the Level 3 full-time course. The course is taught using the extensive practical equine facilities at Enniskillen Campus.



SCAN ME

Course entry requirements

Applicants must normally have obtained at least two GCSE Grade Cs or three Grade Ds, including English Language and Mathematics (or equivalent Essential Skills qualifications in Communication and Application of Number).

Applicants should also normally have completed 40 hours of relevant work experience before starting the course.

Those wishing to undertake the riding unit should be at British Horse Society Stage 1 level. Please note there is a weight limit of 89kg (14 stone), including tack and equipment.

How to apply

Online: www.cafre.ac.uk

Course duration

1 year full-time including a five-week work placement

Course location

Enniskillen Campus

Level 3 Apprenticeship in the Equine Industry

This course provides training and an industry recognised qualification for students working in a diverse range of roles within the industry including grooms, riding centre employees and those training to be riding instructors. Completing the Level 3 Apprenticeship in Equine Industry programme will develop your knowledge and skills necessary to complete your British Horse Society (BHS) Stage 3 qualification.



SCAN ME

Level 2 Apprenticeship in the Equine Industry

Completing an Apprenticeship programme will develop your knowledge and skills necessary to complete your British Horse Society (BHS) Stage 2 qualification.



SCAN ME

Course entry requirements

Applicants must be aged over 16 and about to take up or already be in paid employment working a minimum of 21 hours a week in Northern Ireland.

Applicants must have attained the BHS Stage 2 qualification or the Level 2 Apprenticeship in the Equine Industry, and normally a Grade C in English Language and Mathematics or equivalent.

How to apply

Online: www.cafre.ac.uk

Course duration

2 years part-time

Course location

Workplace and Enniskillen Campus

Course entry requirements

Applicants must be aged over 16 and about to take up or already be in paid employment working a minimum of 21 hours a week in Northern Ireland.

Normally two Grade Cs or three Grade Ds at GCSE or equivalent, including English Language and Mathematics or equivalent.

How to apply

Online: www.cafre.ac.uk

Course duration

2 years part-time

Course location

Workplace and Enniskillen Campus



Higher Education courses

Higher Education programmes are suited to those leaving school with A-Level or equivalent qualifications. Full-time applications to these courses are made through UCAS. Part-time, where applicable, are made directly to the college online through www.cafre.ac.uk

Ulster University validated course applications are subject to meeting their General Entrance Requirements www.ulster.ac.uk/study/entrance-requirements

For entry qualifications other than those listed please refer to the UCAS website: www.ucas.com/ucas/tariff-calculator



BSc (Hons) Degree in Equine Management

The Honours Degree in Equine Management, validated by Ulster University, aims to produce motivated graduates who can understand and apply modern scientific and management principles in an ever-changing equine industry. Graduates will be equipped to carry out a range of practical and managerial activities in equine and non-equine enterprises.



Foundation Degree in Equine Management

The Foundation Degree (FdSc) in Equine Management, validated by Ulster University, is unique within the island of Ireland. This full-time course, which has been developed in consultation with the equine industry, aims to produce motivated graduates with practical and managerial skills and the ability to make sound judgements in all aspects of managing an equine enterprise.



Course entry requirements

Students should normally have 96 UCAS tariff points at A2 Level which must include a Science subject plus four GCSE subjects at Grade C or higher including a Science subject, Mathematics and English Language or equivalent.

How to apply

UCAS course code: D322

Course duration

3 or 4 years depending on work placement duration

Course location

Enniskillen Campus



Course entry requirements

Students should normally have 48 UCAS tariff points at A2 Level plus three GCSE subjects at Grade C including English Language and Mathematics or equivalent.

How to apply

UCAS course code: D422

Course duration

2 years including work placement

Course location

Enniskillen Campus



Certificate of Higher Education in Equine Science and Management

The Certificate of Higher Education in Equine Science and Management, validated by Ulster University, is taught exclusively online. You can study from anywhere in the world and fit your learning around your current professional and personal life.



Course entry requirements

Students should normally have attained two Grade Ds or above at A-Level, equivalent to 48 UCAS tariff points at A2 Level, plus three GCSE subjects at Grade C including English Language and Mathematics or equivalent.

How to apply

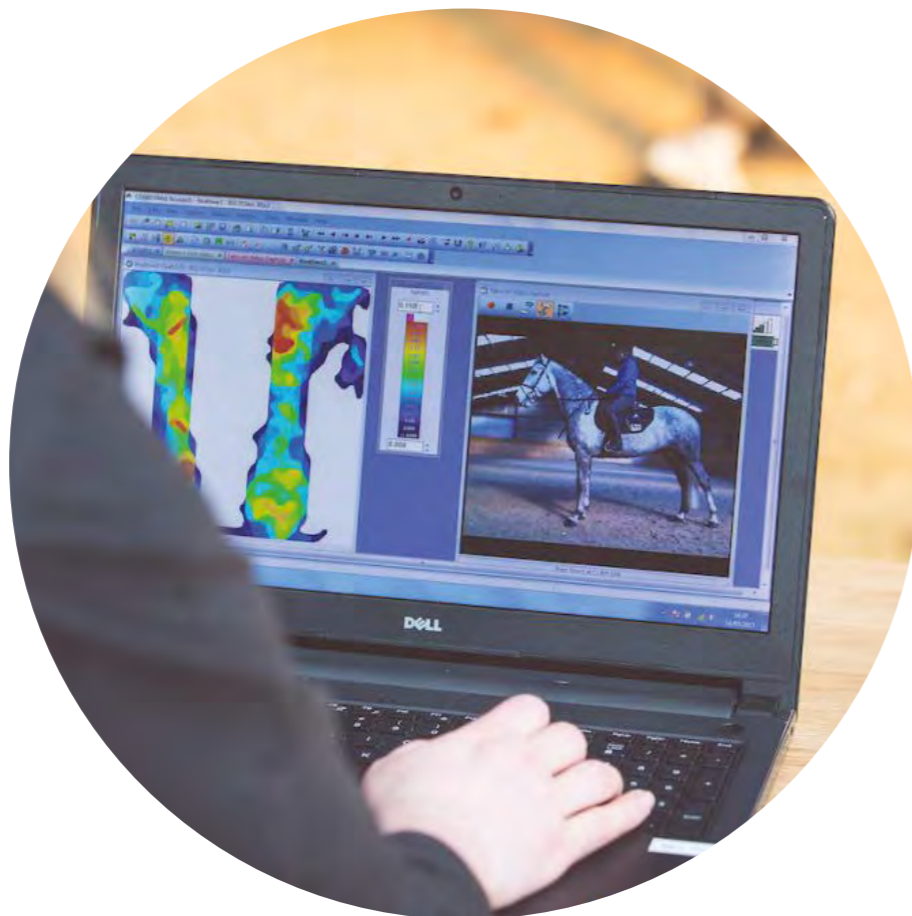
Online: www.cafre.ac.uk

Course duration

2 years

Course location

Online



Floristry

City & Guilds Level 3 Work-based Diploma / Apprenticeship in Floristry

Level 2 Technical Certificate in Floristry



Industry insights

The floristry industry in Northern Ireland is a network of retail florists, wholesale providers and growers of local cut flowers who together offer a range of job opportunities to CAFRE graduates. Floristry competition work underpins this fast-paced industry and helps push creativity and floristry fashion trends.

CAFRE offers the only nationally recognised full-time Level 2 Floristry course in Northern Ireland and has a well established reputation for training those wishing to enter or who are already employed in the floristry industry.

Being an interactive industry, the Level 3 programme is offered as a work-based opportunity allowing those in the sector to study part-time while working to achieve a Level 3 qualification. This option is also available as an Apprenticeship route.

Greenmount florists have an amazing track record of examination and competition success. Many now manage successful flower shops and several have established new floristry businesses.



Floristry careers

For more information on career choices visit the Alumni section of the website:
www.cafre.ac.uk

Junior Florist

As a Junior Florist you will be responsible for conditioning flowers and foliage used in the shop and displaying them for sale. You will also assist in making up designs for a range of customers and occasions, help customers choose suitable designs and gifts, care for plants and help with shop displays and price marking. You will need good people skills and must be able to work as part of a team, especially when the pressure is on at peak sales periods. Creativity and a willingness to learn will help you move up the career ladder to a Florist post.

Florist

As a qualified Florist you will need extensive product knowledge and design skills to create designs suitable for gifts, weddings, corporate events and funerals. Every week you will need to guide customers who are experiencing the highs and lows of life and to do this effectively good communication and customer care skills are essential. With increasing competition from supermarkets, florists need to offer personalised designs at a range of price points and must ensure designs are profitable.

Senior Florist/ Shop Manager

A Senior Florist will have several years' experience of retail floristry and will have built up a high level of design skill. For many Senior Florists the best part of their job is in planning and creating designs for weddings and corporate events. Many people are first attracted to floristry as a career when they have seen the floral displays at a wedding or a stunning bridal bouquet. However, as a Senior Florist, you will probably also be responsible for the day-to-day running of the shop. This will include general administration, ensuring health and safety, contact with suppliers, stock control and ordering, staff training and management and dealing with customer enquiries.

For many florists the ultimate goal is to establish their own successful business and there are also opportunities as design demonstrators, floristry tutors, sales representatives and floristry judges.



Our Floristry facilities

The facilities at Greenmount Campus are unique in Northern Ireland for floristry education and training. The College has excellent purpose built teaching facilities including two Floristry Studios and a new Plant Studio located within the Richardsons Walled Garden.

The studios have dedicated areas for cut flower identification and conditioning, refrigerated display storage, design demonstration and practice, retail display windows and a gift wrapping/customer service area. The new plant studio provides a great environment to develop indoor plant identification and care skills.

A range of summer cut flower and foliage crops are grown for development and demonstration to growers and florists at the College's Horticulture Centre. Floristry students are therefore in the unique position to see at first hand how cut flower, foliage and pot plant crops are produced using modern production methods. In addition, eighteen hectares of amenity grounds at the College provide excellent opportunities to gain plant knowledge.



Further Education courses

Further Education programmes are suited to those leaving school with GCSE or equivalent level qualifications.

Applications to these courses are made directly to the college online through: www.cafre.ac.uk from the 1st October of the year preceding the September you wish to enrol.

Where courses are oversubscribed, entry criteria may be enhanced in line with the College's Admission Policy.



City & Guilds Level 3 Work-based Diploma / Apprenticeship in Floristry

This course is designed to develop the skills of those working in the floristry industry, who have achieved a Level 2 qualification in Floristry, or who have extensive industry experience. Students attend the college one day per week.



SCAN ME

Course entry requirements

All applicants must be currently employed in a florist shop for a minimum of 21 hours per week.

Normally progression from or a previous Level 2 Floristry qualification, or four GCSE Grade Cs or above including English Language and Mathematics plus at least one year of full-time employment with a retail florist

How to apply

Online: www.cafre.ac.uk

Course duration

2 years

Course location

Workplace and Greenmount Campus

City & Guilds Level 2 Technical Certificate

This practical, work-related professional Floristry course is designed to give students a broad understanding and appreciation of the industry. Students put the design and customer service skills gained at the college into practice in their weekly placement with an established floristry business. This programme aims to develop and support the floristry industry and is not a leisure course.



SCAN ME

Course entry requirements

Normally two GCSE Grade Cs or three Grade Ds or above including English Language and Mathematics.

All students must also complete a minimum of 40 hours work experience with a retail florist before starting the course and have arranged a work placement for one day per week during term-time. The teaching team will assist applicants in arranging work experience and placements if necessary.

How to apply

Online: www.cafre.ac.uk

Course duration

1 year

Course location

Workplace and Greenmount Campus

Food

Level 3 Extended Diploma in
Food Technology and Science

Level 3 Extended Diploma in
Food Technology and Nutrition

Level 3 Apprenticeship in
Food and Drink

Level 2 Apprenticeship in
Food and Drink

BSc (Hons) Degree in Food
Innovation Management

Foundation Degree in Food
Innovation and Technology

Level 6 Degree Apprenticeship in
Food and Drink Manufacture

Level 5 Higher Level
Apprenticeship in Food and
Drink Manufacture



Industry insights

The food and drink industry is one of the largest employers in the UK, employing over 4.5m people. It is a buoyant and progressive sector and requires a pool of skilled personnel to ensure a consistent supply of safe, quality products.

As the world population increases, the industry is being challenged with new ways to produce and package foods. As a result, there is great demand for qualified people to work in a wide range of positions in food businesses.

It is a dynamic industry which is constantly changing to meet consumer demands by adopting technological innovations. Food graduates need to develop and apply innovative, technical and business principles in a fast-moving commercial environment and understand the link between food safety, quality and management.

Loughry's courses focus on food processing, product development and innovation, food nutrition, management and business. Graduates develop the knowledge and work-based skills to enable them to secure employment in some of the largest brand leaders within the UK.

At Loughry, we place emphasis on using food science to explore innovative product design and processing techniques to prepare our graduates to help tackle the challenge of sustainable food processing. Students gain scientific knowledge and technical skills enabling them to contribute to an international agri-food industry as they work to ensure global access to healthy diets.



Food careers

The career opportunities described are designed to give you an overview of some of the key roles within the food and drink industry. Loughry graduates are employed across a wide range of jobs and many have progressed into positions of responsibility in food businesses. The level at which graduates enter the food industry will depend on their qualifications and experience.

For more information on career choices visit the Alumni section of the website:
www.cafre.ac.uk

Product Development Technologists

Product Development Technologists design and develop new and innovative food and drink products and work to improve and extend existing ranges of food.

Production Supervisors

Production Supervisors are responsible for the day-to-day activities of manufacturing departments. They lead teams of production staff and schedule manufacturing activities to ensure orders are met at the required time.

Quality Assurance Technicians and Managers

Quality Assurance Technicians are responsible for ensuring the safety and quality of food by monitoring and

controlling the manufacturing process. This includes assuring the quality of ingredients, raw materials and finished products and ensuring that processing operations are within the required parameters.

Laboratory Analysts

Laboratory Analysts contribute to the safety and quality assurance of the food leaving the manufacturer by conducting quality tests and checks such as microbiological and chemical analysis.

Production Managers

Production Managers are responsible for the day-to-day activities of manufacturing departments. They manage teams of production staff and schedule manufacturing activities to ensure orders

are met at the required time. They must be able to understand and implement a variety of food processing techniques and work efficiently in a fast-paced environment.

Food Packaging Technologists

Degree graduates working in this role are responsible for developing new food packaging systems. Identifying the critical properties of a food product, developing packaging specifications and recommending appropriate packaging and filling techniques are typical duties.

Customer Communication Managers

Customer Communication Managers analyse market research data to formulate effective communications strategies. It is vital that companies engage proactively and imaginatively with their customers in order to achieve a competitive edge.

Purchasing Managers

Purchasing managers liaise with suppliers to ensure continuity of supply of ingredients, raw materials and packaging required for the manufacturing process. This involves drawing up specifications, auditing suppliers, sourcing products and scheduling deliveries.

Lecturers and Advisers

Lecturers and Advisers work in a range of posts in government, universities and colleges. All posts require a Honours Degree along with good communication skills and a sound technical knowledge of food processing coupled with particular skills in specialist areas.

Factory Managers

Factory Managers are responsible for the forward planning and running of businesses. This role requires considerable skills in human resource management, performance management and strategic planning. Managers must be familiar with the range of the food processes in their factory and be able to assess the financial impact of their decisions on the business.

Sales and Marketing Managers

Sales and Marketing managers are involved in the presentation and promotion of products to develop relationships with current and potential customers. They carry out research to determine the potential market for new products and forecast sales targets, which in turn informs production throughput decisions.

Distribution and Logistics Managers

Degree graduates employed in this area play a vital role in the success of a company. They are concerned with planning and scheduling deliveries and ensuring product availability; getting the right goods to the right place, in the right condition, at the right time and at minimum cost.

Retail Managers

Retail Managers lead teams of people within supermarkets to maximise sales through market awareness and product presentation. They must be able to identify customer needs and deliver excellent customer service. Marketing and sales techniques must be effectively applied to achieve a competitive advantage.

Our food facilities

Loughry Campus has excellent teaching facilities to support its food education programmes. These include a specialist Food Technology Centre, Food Innovation Centre, Food Packaging Centre and science teaching laboratories.

Food Technology Centre

Food Technology Centre features the latest equipment and materials for producing food to EU standards. The centre incorporates four mini food processing areas: meat, bakery, fruit and vegetable and dairy. It is designed to demonstrate best practice in food and drink manufacture. This unique facility is equipped with an extensive range of modern pilot and industrial scale food processing facilities to ensure that Loughry students acquire the competencies and skills needed by the food industry. Small scale processing equipment allows the demonstration of computerised control systems used in food manufacturing.

Food Innovation Centre

Innovation, product development and creativity are essential for success in the food and drinks industry. The Food Innovation Centre provides an environment to stimulate and support the process of idea generation. The Centre comprises product development labs, sensory suites, an ideas hub and a package prototyping lab to assist in the creation of

new food concepts to meet the needs of a dynamic market place. The facilities within the centre are used by students and many food businesses, retailers and industry bodies working in our agri-food sector.

Food Packaging Centre

The Food Packaging Centre is a unique and well-equipped facility used to evaluate packaging materials and complete packs. As food companies strive to meet consumer expectations through innovative packaging, Loughry Campus graduates are in a prime position to make a significant impact on the industry having worked in the centre.

Science laboratories

Loughry's laboratories are equipped with advanced scientific equipment which enables students to carry out microbiological, chemical and physical analysis of food ingredients and products. The latest technologies in food analysis are continuously being reviewed, thus enabling students to gain valuable knowledge and experience relevant to careers in the industry.



Further Education courses

Further Education programmes are suited to those leaving school with GCSE or equivalent level qualifications.

Applications to these courses are made directly to the college online through www.cafre.ac.uk from the 1st October of the year preceding the September you wish to enrol.

Where courses are oversubscribed, entry criteria may be enhanced in line with the College's Admission Policy.



OCN NI Level 3 Extended Diploma in Food Technology and Science

This full-time course is designed to develop an understanding of food science and technology. This course prepares students for employment or progression onto higher-level courses.



Course entry requirements

Normally four GCSE Grade Cs or above including English Language, Mathematics and Science.

How to apply

Online: www.cafre.ac.uk

Course duration

2 years

Course location

Loughry Campus

OCN NI Level 3 Extended Diploma in Food Technology and Nutrition

This full-time course is designed to develop a knowledge and understanding of the links between food science, technology, nutrition and health. This course prepares students for employment or progression onto higher level courses.



Course entry requirements

Normally four GCSE Grade Cs or above including English Language, Mathematics and Science.

How to apply

Online: www.cafre.ac.uk

Course duration

2 years

Course location

Loughry Campus



Level 3 Apprenticeship in Food and Drink

Apprenticeship programmes aim to develop the skills that employers want and give you choices to progress your career. Level 3 Apprenticeships are offered in a diverse range of work areas within the food and drink sector including: Bakery, Food Industry Skills and Technical Management, Food Manufacturing Excellence, Fresh Produce, Fish and Shellfish and Meat and Poultry.

Course entry requirements

Applicants must be aged over 16 and about to take up, or already be in paid employment working a minimum of 21 hours a week, in a food business in Northern Ireland.

How to apply

We welcome enquiries from companies based in Northern Ireland. Applications are made through your employer rather than on an individual basis to the college.

Course duration

Normally 2 years

Course location

Workplace



SCAN ME



Level 2 Apprenticeship in Food and Drink

Apprenticeship programmes aim to develop the skills that employers want and give you choices to progress your career. Level 2 Apprenticeships are offered in a diverse range of work areas within the food and drink sector including: Bakery, Brewing, Dairy, Fish and Shellfish, Food Industry Skills, Food Manufacturing Excellence, Food Team Leading, Fresh Produce and Meat and Poultry.

Course entry requirements

Applicants must be aged over 16 and about to take up, or already be in paid employment working a minimum of 21 hours a week, in a food business in Northern Ireland.

How to apply

We welcome enquiries from companies based in Northern Ireland. Applications are made through your employer rather than on an individual basis to the college.

Course duration

Normally 2 years

Course location

Workplace



SCAN ME



Higher Education courses



Higher Education programmes are suited to those leaving school with A-Level or equivalent qualifications.

Full-time applications to these courses are made through UCAS. Part-time, where applicable, are made directly to the college online through www.cafre.ac.uk

Ulster University validated course applications are subject to meeting their General Entrance Requirements www.ulster.ac.uk/study/entrance-requirements/

For entry qualifications other than those listed please refer to the UCAS website: www.ucas.com/ucas/tariff-calculator

We are excited to share we will be offering new degree courses at Loughry Campus for September 2025 entry. Please refer to our website where timely course updates will be shared.

BSc (Hons) Degree in Sustainable Agri-Food Management

In this new degree you will learn about the agri-food supply chain addressing current and future industry challenges to develop your knowledge of issues such as traceability, sustainability and logistics. The new BSc Honours Degree in Sustainable Agri-Food Management, is subject to validation by Ulster University for the 2025 intake.



Course entry requirements

Students must have achieved 96 UCAS points at A2 level and have a Grade C or higher in either a Business or Science related subject at A2 level. In addition, GCSE Science at Grade C or higher is also required.

How to apply

UCAS course code: DB65

Course duration

3 or 4 years depending on work placement duration

Course location

Loughry Campus

BSc (Hons) Degree in Food Innovation Management

In this degree you will learn about food, health, innovation, nutrition and packaging. The new BSc Honours Degree in Food Innovation Management, with pathways in Nutrition and Technology is pending final approval by Ulster University.



Course entry requirements

Students must have achieved 96 UCAS points at A2 level and have a Grade C or higher in a Science related subject at A2 level. In addition, GCSE Science at Grade C or higher is also required.

How to apply

UCAS course code: DB64

Course duration

3 or 4 years depending on work placement duration

Course location

Loughry Campus

Foundation Degree in Food Innovation and Technology

The new Foundation Degree (FdSc) in Food Innovation and Technology is pending final approval by Ulster University. The course has been redesigned to equip graduates with the knowledge and skills to develop and produce innovative, nutritious and safe foods.



Course entry requirements

Students must have achieved 48 UCAS points at A2 Level and have a Grade D or higher in a Science related subject at A2 level. In addition, GCSE Science at Grade C or higher is also required.

How to apply

UCAS course code: BD46

Course duration

2 years including work placement

Course location

Loughry Campus

Level 6 Degree Apprenticeship in Food and Drink Manufacture

The Degree Apprenticeship is a part-time, work-based programme. It aims to offer employees the opportunity to develop a strong technical background and so progress their employment in the food industry. Apprentices earn while learning to gain a BSc (Hons) Degree in Food and Drink Manufacture, validated by Ulster University.



Course entry requirements

Applicants must be about to take up, or already be in paid employment, working a minimum of 21 hours a week in a food and drink manufacturing business in Northern Ireland.

Applicants must have attained a Foundation Degree in Food and Drink Manufacture, a Foundation Degree in Food Manufacture and Nutrition or an equivalent qualification.

How to apply

Online: www.cafre.ac.uk

Course duration

2 years, part-time

Course location

Workplace and Loughry Campus

Level 5 Higher Level Apprenticeship in Food and Drink Manufacture

The Level 5 Higher Level Apprenticeship (HLA) course is a work-based programme aimed at anyone who has completed A-Level or equivalent qualifications. The programme aims to develop employees to have strong technical background to progress their employment with food businesses. Apprentices earn while learning to gain a Foundation Degree in Food and Drink Manufacture, validated by Ulster University.



Course entry requirements

Applicants must be about to take up, or already be in paid employment, working a minimum of 21 hours a week in a food and drink manufacturing business in Northern Ireland.

Applicants must have a minimum of two A-Levels or equivalent qualifications (which could include a Level 3 Extended Diploma or Level 3 Apprenticeship) plus a minimum three GCSE or equivalent qualifications at Grade C or above including English Language, Mathematics and a Science subject.

How to apply

Online: www.cafre.ac.uk

Course duration

3 years, part-time

Course location

Workplace and Loughry Campus



Horticulture

Level 3 Advanced Technical
Extended Diploma in Horticulture

Level 2 Diploma in Practical
Horticulture Skills

Level 3 Work-based Diploma/
Apprenticeship in Horticulture

- Sports turf Management
- Landscape Maintenance

Level 2 Work-based Diploma/
Apprenticeship in Horticulture

- Sports turf/Greenkeeper
- Parks, Gardens and Greenspaces

Greenkeeping Cadetship
Programme

BSc (Hons) Degree
in Horticulture

Foundation Degree
in Horticulture



Industry insights

Horticulture is the science, art, technology and business of cultivating ornamental plants, fruit and vegetables for human use or enjoyment. It is practiced at all levels from individuals at home to the activities of multi-national corporations.

Business, production and food in the UK horticulture industry is worth over £5 billion each year. Businesses growing fruit and vegetables employ over 50,000 people, while ornamental plant nurseries and garden centres produce and sell millions of plants, generating thousands more jobs.

Horticulturalists play a major role in all areas concerned with designing, creating, managing and maintaining our environment. As designers and managers of urban and rural landscapes, horticulturalists are at the forefront of the world in which we live, work and play.

There is scientific evidence that we work and feel better in pleasant, planted surroundings with trees and other plants having a positive effect on health, both indoors and outdoors. Horticulture impacts on many aspects of our lives and provides fascinating job opportunities in a wide variety of work activities.



Horticulture careers

Graduates from our Further Education courses have the option of continuing their study for a higher-level qualification or may seek employment after graduation.

For more information on career choices visit the Alumni section of the website:

www.cafre.ac.uk

Horticultural worker/Gardener/Garden Supervisor/Head Gardener

This type of work involves preparing and maintaining areas of planting, mowing and maintaining turf areas, pruning plants and trimming hedges. There are opportunities with local authorities, historic public gardens and private properties. Some gardeners specialise in nursery work and may also need to be skilled in estate maintenance.

You need to develop a good knowledge of botanical plant names and know what conditions will suit particular plants best. You will also need to enjoy working outdoors, in all types of weather, and like the challenge of hands on activity. In a more senior post you may also be responsible for conserving valuable plant collections, supervising staff, organising garden events, managing budgets, garden development and dealing with the public.

Greenkeeper/Grounds Person

Northern Ireland is internationally recognised as a premier location for golf courses, and CAFRE has supported this achievement over the years by training staff responsible for looking after these golf courses.

Level 2 greenkeepers and grounds persons are trained to safely operate the range of machinery in common use on golf courses and sports grounds (including natural and synthetic sport surfaces). As a trained greenkeeper, you will be able to care for, and present turf surfaces for golf, ranging from tees and greens, to fairways and roughs. This involves managing the feeding and irrigation as well as pest and disease control, helping maintain the surface so that the sport can be played at the highest competitive level. A grounds person fulfils a similar role, working on a range of playing surfaces, whether for football, rugby, Gaelic games, tennis or bowling.

Level 3 sports turf students have taken this training one step further and are able to supervise the maintenance of sports turf, including making decisions on treatment regimes, machinery management and construction.

Garden Centre Assistant/Supervisor

If you have a good plant and product knowledge and enjoy working with the public this could be the career for you. As a garden centre assistant you will be responsible for the care and presentation of a wide range of plants and garden sundries. You will need to be able to provide good advice to customers and develop your sales technique. More senior posts will also involve ordering and stock control, planning promotions, recruiting and managing staff and possibly organising catering facilities.

Nursery Worker/Nursery Supervisor/ Grower

Production horticulture is the starting point for many food and ornamental crops. In some cases crops are started off for other growers to purchase and grow on; in other cases the crop will be grown to point of sale and then sold to a garden centre (i.e.: bedding plants) or into the food system (i.e.: strawberries).

At Level 2, students gain skills in propagation techniques, learn about protected crop maintenance and learn how to safely use a range of horticulture machinery. As a Nursery worker, you will undertake a range of tasks to care for a given crop such as propagation, watering, setting out, weeding, training/pruning and preparation for sale.

Progressing to Level 3 at CAFRE brings a better understanding of management of protected crops through skills including propagation scheduling, further propagation techniques, care and management of crops from seedling/cutting through to finished plant. Students also work in a range of facilities at the Horticulture Centre including single and multi-span poly tunnels, Cambridge glasshouses, Venlo Glasshouse and the wide range of growing systems within these facilities. On completion of the Level 3 Horticulture you will be suited to a supervisory role within a Nursery or even set out on your own as a Grower. Both roles require knowledge and understanding of crop timing and management as well as staff supervision/management.

Landscape Worker/Contractor

CAFRE trained landscapers and contractors are trained at Level 2 to safely use a range of machinery for the landscape sector. Skilled people working in these areas are able to read from landscape plans and set out and construct gardens and landscaped areas, as well as looking after the plants, shrubs and trees in the gardens afterwards. At Level 3, CAFRE trained landscapers are able to plan and design gardens, as well as supervising the work of building and maintaining landscaped areas and gardens for customers.

Graduates from our Higher Education have a wealth of career opportunities available to them; from developing new food crops, to designing and building park and recreational spaces, rewarding jobs are on offer.

For more information on career choices visit the Alumni section of the website:
www.cafre.ac.uk

Landscape Contractor

CAFRE graduates can expect to enter the landscaping sector as supervisors or junior managers, or they may set up their own business. The work involves liaising with clients, sourcing supplies, tendering, recruitment, staff management, organising work and practical landscaping.

Nursery Manager

Nurseries come in many shapes and sizes, from large hi-tech specialist operations producing millions of plants per year, to small specialist family-run businesses. In both cases, to be a successful nursery manager you need to be technically up-to-date and have good business skills.

Grower

Those with land and especially those who can grow under the protection of glass or polythene can commercially produce a wide range of ornamental and edible crops. These crops include vegetables, strawberries, raspberries, blueberries, apples, pears, cut flowers, bedding, pot plants, alpines, herbaceous perennials, shrubs, trees and many more. Modern production is highly specialist and technical

requiring a wide portfolio of skills but it is very challenging and rewarding.

Sports Turf Manager

The need for well trained, highly motivated greenkeepers and grounds staff to manage golf courses and sports facilities has increased over the past few years. Managers need to have good interpersonal skills, technical knowledge and staff management skills.

Garden Centre Manager

Being a garden centre manager is a challenging position involving management of staff and resources, purchasing, maximising sales and profits, merchandising and customer service. Good people skills are very important in this job.

Parks/Estate Manager

Careers include positions in local authority parks, public and historic gardens and in landscape management. The work is often varied, including organising planting, handling tenders, monitoring contracts, managing staff, planning and consulting with the public.

Garden Designer

Designing gardens combines art, design and horticulture. Designers work with the owners of gardens, small and large alike, advising them how their gardens can be developed into places of beauty. Many designers also offer a service to build the gardens. Other employment opportunities exist with local authorities or as garden designers for garden centres or contractors.

Other opportunities

Horticulture graduates also find employment in a range of other areas including teaching/instruction, community project management, tree surgery, horticulture therapy and journalism.



Horticulture facilities

Greenmount is a well-established centre for Horticulture education and has delivered full-time courses in Horticulture since 1924. Greenmount Campus is set in 18 hectares of wonderful, landscaped grounds. The estate was originally laid out in the 19th century and some of the original parkland trees and garden features provide focal points in today's modern gardens.

Production facilities

The Horticulture Centre has a wide range of production facilities for both edible and ornamental crops. There are polytunnels and nursery facilities for growing trees and shrubs, pot plants, bedding plants and cut flowers. A modern glasshouse block has six environmentally controlled growing environments demonstrating systems such as nutrient film technique and ebb and flood floors. A new training centre houses potting, transplanting and compost mixing machines. These production resources are used both for teaching and technology projects.

Landscape facilities

Greenmount's grounds include a large walled garden which has been in continuous use since it was built in 1801. The garden has been redesigned in a dramatic formal style. With its knot gardens, maze, rose garden, fruit garden and other ornamental plantings it is a showpiece for horticulture and a superb outdoor classroom. The Campus has extensive plant collections including The Rose Garden that showcases the varieties of rose cultivars which have won the DARD/DAERA award at the Belfast International Rose Trials over the past 50 years. The latest addition to our outdoor classroom is a landscape gardening training facility for teaching skills such as fencing, paving and installing water features.

Sports turf facilities

The College's eleven-hectare sports turf area is comprised of multifunctional playing fields and a Greenkeeping and Golf Academy. The complex, supported by Golf Ireland, has a unique contoured driving range, practice chipping and putting greens and a three full playing hole golf course, incorporating many different bunker styles and water features.

Machinery and buildings facilities

The Machinery and Buildings Centre includes a fully equipped horticultural machinery workshop, where students can practice machinery maintenance operations. These skills are especially important in the sports turf sector which regularly relies on expensive and high tech equipment. There is also a buildings demonstration workshop used to teach estate skills and an extensive hard landscaping area adjacent to the Walled Garden where students practice their landscaping skills through developing garden plots.



Further Education courses

Further Education programmes are suited to those leaving school with GCSE or equivalent level qualifications.

Applications to these courses are made directly to the college online through www.cafre.ac.uk from the 1st October of the year preceding the September you wish to enrol.

Where courses are oversubscribed, entry criteria may be enhanced in line with the College's Admission Policy.



City & Guilds Level 3 Advanced Technical Extended Diploma in Horticulture

This full-time course is taught over two years. It offers students the opportunity to develop the knowledge and practical skills required for a wide range of careers in plant science and technology, garden design and landscape construction, edible and ornamental plant production, heritage gardening and conservation, green keeping and groundsmanship, horticultural therapy and garden retailing.



Course entry requirements

Normally four GCSE passes at Grade C or above including English Language and Mathematics

OR

Level 2 Diploma in Practical Horticulture Skills at Merit level or above and Grade C in English Language and Mathematics or equivalent.

Applicants who are still at school are encouraged to undertake their school work experience with a horticultural business.

How to apply

Online: www.cafre.ac.uk

Course duration

2 years

Course location

Greenmount Campus



City & Guilds Level 2 Diploma in Practical Horticulture Skills

This one-year, full-time course provides students with a wide range of skills for employment in horticulture. Students are taught mainly through practical tuition in the ornamental gardens, woodlands, glasshouses and sports turf areas on campus.



SCAN ME

Course entry requirements

Normally two GCSE Grade Cs or three Grade Ds, including English Language and Mathematics.

Applicants who are still at school are encouraged to undertake 40 hours of work experience with a horticultural business.

How to apply

Online: www.cafre.ac.uk

Course duration

1 year

Course location

Greenmount Campus

City & Guilds Level 3 Work-based Diploma/ Apprenticeship in Horticulture (Sports turf Management)

This two-year part-time course develops the practical skills and underpinning knowledge related to working in the sports turf sector. It is specifically aimed at people employed in maintaining sports turf and is ideal for those who have already completed a Level 2 qualification in sports turf and wish to further develop their career. On completion of this course, students receive a Level 3 Diploma in Work-based Horticulture.



SCAN ME

Course entry requirements

Normally applicants must be working within the sports turf sector for at least 21 hours per week and have a Level 2 qualification in sports turf or an equivalent qualification and GCSE Grade C in English Language and Mathematics or equivalent qualifications.

How to apply

Online: www.cafre.ac.uk

Course duration

2 years part-time

Course location

Workplace and Greenmount Campus



City & Guilds Level 3 Work-based Diploma/Apprenticeship in Horticulture (Landscape Maintenance)

This two-year part-time course is specifically aimed at people maintaining parks and open spaces and those offering professional landscape maintenance services. On completion of this course, students receive a Level 3 Diploma in Work-based Horticulture.



SCAN ME

City & Guilds Level 2 Work-based Diploma/Apprenticeship in Horticulture (Parks, Gardens and Greenspaces)

This course provides valuable in-service training for those already employed or self-employed in the amenity horticulture sector. It is primarily designed for those who are already working in parks maintenance or delivering professional landscape maintenance services. Students attend college one day per week over two years.



SCAN ME

cafre.ac.uk

Course entry requirements

Normally applicants must be working in landscape maintenance for at least 21 hours per week and have completed a Level 2 Diploma in Horticulture or above, or an equivalent qualification and normally Grade C in English Language and Mathematics or equivalent.

How to apply

Online: www.cafre.ac.uk

Course duration

2 years, part-time

Course location

Workplace and Greenmount Campus

Course entry requirements

Applicants must be employed or self-employed in a relevant job within the amenity horticulture sector for at least 21 hours per week and should normally have two GCSE Grade Cs or three Grade Ds including English Language and Mathematics or equivalent.

How to apply

Online: www.cafre.ac.uk

Course duration

2 years, part-time

Course location

Workplace and Greenmount Campus

City & Guilds Level 2 Work-based Diploma/Apprenticeship in Horticulture (Sports Turf Greenkeeper)

This course provides valuable in-service training for those already employed or self-employed in the sports turf sector. It is primarily designed for those who are already working as trainee and assistant greenkeepers or grounds persons. Students attend college one day a week over two years.



SCAN ME

Greenkeeping Cadetship Programme

In association with Golf Ireland, CAFRE offers a Greenkeeping Cadetship programme. The programme is aimed at people aged 16-24 who have a keen interest in developing a career in greenkeeping. Golf Ireland supports two or three greenkeeping students per year with a generous financial bursary. The candidates selected complete the City & Guilds Level 2 Diploma in Work-based Horticulture (Sports Turf Greenkeeper) programme and gain practical experience while working on the sports turf areas and campus grounds.



SCAN ME

Course entry requirements

Applicants must be employed or self-employed in a relevant job within the amenity horticulture sector for at least 21 hours per week and should normally have two GCSE Grade Cs or three Grade Ds including English Language and Mathematics or equivalent.

How to apply

Online: www.cafre.ac.uk

Course duration

2 years, part-time

Course location

Workplace and Greenmount Campus

Course entry requirements

Applicants must have relevant practical experience and a minimum of four GCSE Grade Cs or equivalent including English Language and Mathematics and a keen interest in the game of golf.

Each year Cadets are selected based on a competitive interview by a panel of Golf Ireland and CAFRE representatives.

How to apply

Online: www.cafre.ac.uk

Course duration

1 year, full-time

Course location

Greenmount Campus

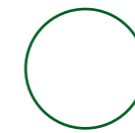
Higher Education courses

Higher Education programmes are suited to those leaving school with A-Level or equivalent qualifications.

Full-time applications to these courses are made through UCAS. Part-time applications are made directly to the college online through www.cafre.ac.uk

Ulster University validated course applications are subject to meeting their General Entrance Requirements www.ulster.ac.uk/study/entrancerequirements/

For entry qualifications other than those listed please refer to the UCAS website www.ucas.com/ucas/tariff-calculator



BSc (Hons) Degree in Horticulture

The Honours Degree in Horticulture is validated by Ulster University. The course provides the ideal opportunity for those who have completed a Foundation Degree in Horticulture to progress onto an Honours Degree qualification.



Course entry requirements

Applicants must have previously attained the award of a Foundation Degree in Horticulture since 2015 or provide evidence of their ability to undertake the programme through the accreditation of prior experiential learning (APEL), having studied and achieved accreditation in Level 5 modules of sufficient credit value in related disciplines.

Prior to commencing the Honours Degree course, Foundation Degree graduates must successfully complete 40 credits of Level 5 Bridging Studies modules, completed over the summer months.

How to apply

Full-time UCAS course code: D416
Part-time online: www.cafre.ac.uk

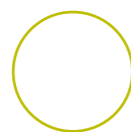
Course duration

Full-time: 1 year
Part-time: 2 years

Course location

Greenmount Campus





Foundation Degree in Horticulture

The Foundation Degree (FdSc) in Horticulture is validated by Ulster University. It is an ideal qualification for those wishing to progress their career towards management or technical roles in the horticulture industry.



Course entry requirements

Applicants should normally have at least 48 UCAS tariff points at A2 Level plus four appropriate GCSEs or equivalent, including English Language and Mathematics at Grade C or above.

How to apply

Full-time UCAS course code: D415
Part-time online: www.cafre.ac.uk

Course duration

Full-time: 2 years
Part-time: 4 years

Course location

Greenmount Campus



Land-based Engineering

City & Guilds Level 3 Advanced Technical Extended Diploma in Land-based Engineering



Industry insights

All those familiar with modern agriculture will appreciate the crucial role that machinery plays in this industry.

As machinery becomes more complex, more and more people with specialist technical training are needed to service, maintain and repair this equipment.

Given the complexity and high value of machinery, good career opportunities exist in this sector.

There are progression opportunities for those wishing to further their studies.



Land-based Engineering careers

Working in this sector is not always easy; hours can be long and sometimes work needs to be done outdoors in difficult conditions. Work is challenging and varied and most of those in the industry derive a high level of satisfaction from their work.

For more information on career choices visit the Alumni section of the website:
www.cafre.ac.uk

Service technician or engineer

The work involves the service and repair of agricultural machinery, both in the workshop and in the field. More often than not, diagnosis of faults on modern equipment involves the use of diagnostic tools and IT equipment. There is a strong demand for technicians and service engineers with skills in this area.

Product support personnel

Many students completing the course have an interest in tractor and agricultural machinery sales. A number of past students are currently employed in these roles. Similarly, there are openings for those who wish to work in product support and related technical roles. The course provides a useful foundation for someone embarking on a machinery sales or product support role.



There is a strong demand for technicians and service engineers with skills in this area.

Land-based Engineering facilities

The Machinery and Buildings Centre (MBC) was specifically designed to accommodate all of the engineering training at Greenmount Campus. A range of workshops facilitates training in service engineering and related workshop skills.

Equipment

Greenmount Campus is well equipped in terms of hand tools, power tools and other workshop equipment. In addition, models, display rigs and testing equipment are available to demonstrate the underpinning principles of modern farm machinery.

The College enjoys excellent relationships with tractor and machinery manufacturers and suppliers.

The College enjoys excellent relationships with machinery and tractor manufacturers and suppliers.



Further Education courses

Further Education programmes are suited to those leaving school with GCSE or equivalent level qualifications.

Applications to these courses are made directly to the college online through www.cafre.ac.uk from the 1st October of the year preceding the September you wish to enrol.

Where courses are oversubscribed, entry criteria may be enhanced in line with the College's Admission Policy.



City & Guilds Level 3 Advanced Technical Extended Diploma in Land-based Engineering

The Level 3 Advanced Technical Extended Diploma in Land-based Engineering course develops the underpinning knowledge and practical skills you will need to work as a service engineer in the land-based sector.



Course entry requirements

Normally four GCSE Grade Cs at GCSE including Mathematics and English Language, or equivalent qualifications.

Applicants must demonstrate that they have a minimum of 40 hours of experience in the service engineering industry, gained in a workshop environment.

How to apply

Online: www.cafre.ac.uk

Course duration

2 years, full-time

Course location

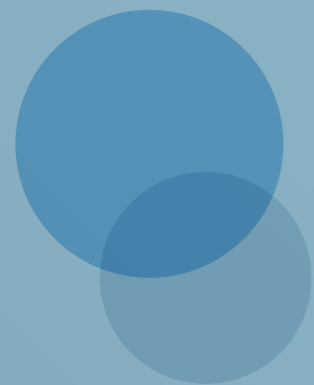
Greenmount Campus



Veterinary Nursing

Level 3 Diploma in Veterinary Nursing (Companion Animal)

Level 2 Certificate in Veterinary Care Support



Industry insights

Greenmount offers veterinary care courses designed to prepare students for careers in the animal care professions.

Our Level 2 and Level 3 courses provide the appropriate knowledge to complement the practical skills acquired while working in a veterinary practice. Students develop their teamwork and interpersonal skills whilst studying at CAFRE.

Veterinary Nursing is a dynamic profession and there are many different careers students can explore after completing their Veterinary Nursing courses at both Level 2 and Level 3. Students can choose to continue work in clinical practice or seek other opportunities. Registered Veterinary Nurses (RVNs) hold many transferable skills that can open the door to a variety of

careers, for example within the pharmaceutical, research, insurance, nutrition and education fields and many more! Because of the RVN's unique role in veterinary practice, many nurses also choose to open and manage their own practice.



Veterinary Nursing careers

Working in this sector is not always easy; hours can be long and the role challenging. However, it is an extremely rewarding and satisfying career.

For more information on career choices visit the Alumni section of the website:

www.cafre.ac.uk

Level 2 course graduates

After completing their study, students can continue to work in clinical practice where they will be part of the veterinary team, working alongside registered veterinary nurses and veterinary surgeons. No day will be the same! Some of the jobs they might undertake in practice include feeding, grooming and exercising hospitalised inpatients, supporting staff in theatre by preparing and cleaning instruments and equipment, preparing and cleaning accommodation for animals, restraining animals for treatment or procedures, reception duties and record keeping and much more! It is a really varied and important supportive role in veterinary practice. Students may also wish to progress onto the Level 3 course in order to qualify as a registered veterinary nurse.



Level 3 course graduates

Once students complete their Level 3 studies, they gain their professional qualification and licence to practice. This means they enter onto the Royal College of Veterinary Surgeons register as a veterinary nurse and can use the post nominals RVN (Registered Veterinary Nurse). The role of an RVN is really dynamic and nurses are responsible for many of the main areas in veterinary practice! Their jobs may include leading on inpatient care, conducting client consults and running of nurse clinics, triaging emergency cases, managing anaesthesia, undertaking diagnostic imaging, performing minor surgery, mentoring student nurses and vets, assisting veterinary colleagues with procedures and the list goes on! RVNs can also move away from clinical practice into education, consulting for animal health companies, research, as reps for pharmaceutical and other animal focussed companies and much more.



Veterinary Nursing facilities

Greenmount Campus provides an attractive learning environment for all students. Taught sessions take place in our classroom facilities, whilst practical sessions take place in a specialist space, fitted with all the equipment necessary to learn the practical skills needed for qualification as a registered veterinary nurse or as part of the veterinary support team.

The campus has a laboratory equipped with laboratory analysers, refractometers, microscopes, centrifuges and commercial test kits.

The course is taught by supportive and experienced industry professionals, all holding RCVS registered qualifications.

Students have access to the Greenmount Resource Centre with its extensive library, work rooms and study areas.

The campus also has excellent computer facilities for students with the most up to date online teaching materials available.



Further Education courses

Further Education programmes are suited to those leaving school with GCSE or equivalent level qualifications.

Applications to these courses are made directly to the college online through www.cafre.ac.uk from the 1st October of the year preceding the September you wish to enrol.

Where courses are oversubscribed, entry criteria may be enhanced in line with the College's Admission Policy.



VetSkill Level 3 Diploma in Veterinary Nursing (Companion Animal)

This course is designed for those working in practice to become a Registered Veterinary Nurse with the Royal College of Veterinary Surgeons (RCVS). Upon successful completion of the qualification students can complete their enrolment with the RCVS and practice as a Registered Veterinary Nurse (RVN).



Course entry requirements

Applicants must have at least five GCSE passes at Grade C or above including English Language, Mathematics and a Science subject.

Applicants must have completed three months or 400 hours work experience in a veterinary practice.

Applicants must be employed in a CAFRE approved training practice. A list of current approved veterinary practices in Northern Ireland is available on the website. It is the responsibility of the applicant to secure employment within an approved practice, CAFRE is not involved in the employment process.

How to apply

Online: www.cafre.ac.uk

Course duration

2.5 years, part-time

Course location

Greenmount Campus

Level 2 Certificate in Veterinary Care Support

The aim of this course is to equip individuals with the skills and knowledge required to support qualified veterinary staff and prepare them for a veterinary care supporting role. This course may be used for progression on to the Level 3 Diploma in Veterinary Nursing (Companion Animals) qualification, subject to additional entry conditions being met.



SCAN ME

Course entry requirements

Applicants must have at least two GCSE Grade Cs or three Grade Ds including English Language and Mathematics or equivalent qualifications.

Applicants must have secured a work placement for 600 hours for the duration of the course. These hours exclude breaks, holidays or sickness and must be undertaken to complete the course. The work experience provider must enable the student to experience the full range of activities in this qualification. Applicants must have a placement secured in advance of applying for the course. Placements must be located in a Veterinary Practice in Northern Ireland.

How to apply

Online: www.cafre.ac.uk

Course duration

1 year, part-time

Course location

Greenmount Campus



Important and legal information

Terms and Conditions

As a condition of enrolment all students must abide by and submit to the rules and procedures specified in the College Regulations, Students' Charter and the Joining Instructions. A copy of the current rules, regulations and information for students will be issued to all prospective students at or before enrolment. The College will make all reasonable endeavours to deliver its courses in accordance with the descriptions set out on the website. The courses offered are continually being improved through review and quality assurance processes by the College and Awarding Bodies. The College therefore reserves the right to make variations to the contents or methods of delivery of courses, if such actions are reasonably considered necessary by the College in the context of its wider provision.

Policy on Equal Opportunities

The College is fully committed to providing equality of opportunity. It is our policy to ensure that everyone associated with the College is treated equitably, regardless of religious belief, gender, whether or not they have a disability, race, political opinion, age, marital status, sexual orientation, or whether or not they have dependant(s). CAFRE welcomes applications from students aged over 21 years on 1st October of the year of

entry. Each student is considered on his/her individual merit, taking into account academic qualifications and other relevant experience. Evidence of recent academic study is particularly relevant to applications for degree courses. The College welcomes applications from students who have successfully completed relevant Access courses.

Special needs

CAFRE strives to provide an inclusive learning environment and welcomes and encourages applications from persons with a disability. Applicants are advised to disclose learning needs or disabilities on their application form to give CAFRE an understanding of their support needs and any reasonable adjustments that might be required. Disability will not be considered as part of the selection process. All courses offered at CAFRE have an element of application in a practical situation.

Complaints procedures

A booklet entitled 'Our Complaints Procedure' is available on the DAERA website: www.daera-ni.gov.uk and sets out the standards to which we operate with regard to all our customers. For example, course applications will be acknowledged within two working days and outcomes of College interviews will be issued within five working days of the interview.



Written complaints or comments should be sent to the Customer Services Department at any of the campuses. If you feel that we have not dealt with your comment, complaint or suggestion to your satisfaction you can write to the Complaints Officer at any of the campuses.

The Northern Ireland Public Services Ombudsman offer advice about making a complaint if you feel that you have been treated unfairly or have received a poor service or that your complaint has not been resolved to your satisfaction.

The Ombudsman can be contacted on: freephone 0800 34 34 24.

Information correct at time of printing, April 2024. Please refer to our website for updated information: www.cafre.ac.uk

All course enquiries
Telephone: 028 9442 6601
Email: cafreenquiries@daera-ni.gov.uk
Website: www.cafre.ac.uk

If you require this publication
in an alternative format please
contact College Administration on
Telephone: 028 9442 6601 quoting
reference Course Guide 2025.

Printed on recycled paper - Revive
100 pure white silk, produced using
100% recycled waste at a mill that has
been awarded the ISO14001 certificate
for environmental management.

The pulp is bleached using a totally
chlorine free (TCF) process.

Enniskillen Campus

2 Mullaghmeen Road
Levaghy
Enniskillen
BT74 4GF

Greenmount Campus

45 Tirgracy Road
Muckamore
Antrim
BT41 4PS

Loughry Campus

76 Dungannon Road
Cookstown
BT80 9AA